

Technical data

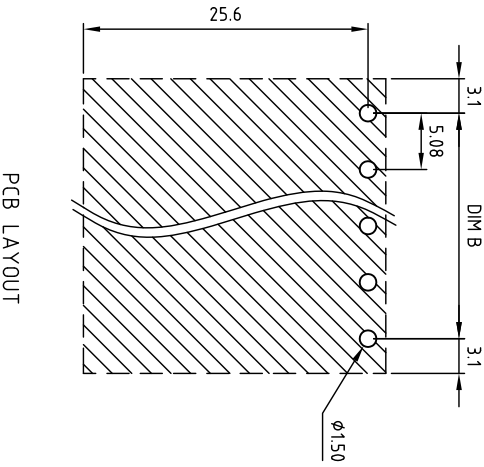
- 1.Nominal voltage: 300V/15A  
PITCH:5.08mm
- 2.Connection capacity:  
AWG 30-12
- 3.Insulation Withstanding Voltage:  
AC 1600V/MIN
- 4.Insulation Resistance:  
1000MΩ or more at DC500V
- 5.Tightening torque:  
4.3Lb-in(5.0kgf.cm / 0.5Nm)
- 6.Screw thread: M2.5
- 7.Stripping length: 6-7mm
- 8.Using temperature range:-40°C ~ 115°C  
Soldering temperature:250±10°C/5s
- 9.Undimen stioned Tolerances:

Dim L=P×5.08	Dim B	Dim L
Dim B=(P-1)×5.08	±0.15	±0.20
P = number of poles (02-24P)	±0.20	±0.25
	±0.25	±0.30
0-30mm	±0.30	±0.40
over 30mm-60mm		
over 60mm-90mm		
over 90mm		

- 10.Safety approval:
- 11.RoHS Compliance
- 12.Critical dimension:  $\nabla$

EQHM508 xx X Dxx

- ① Poles 02-24
- ② Color  
0 Black 3 Orange 5 Green 6 Blue G Pale gray.....
- ③ Custom  
D00 K MARK D0K KUNACON MARK.....



REV	SIGN	DESCRIPTION	CHK	DATE
Δ				

ITEM	NAME OF PART	MATERIAL	NOTES
4	SCREW	STEEL	
3	CAGE	BRASS	M2.5×0.45, Zn Plated
2	CONTACT	BRASS	M2.5×0.45, Ni PLATED
1	BODY	PA66 UL94V-0	Tin PLATED

DWG APP.	WF. Zhang	DATE	UNITS	MM	SHEET	1 OF 1	Tolerance
CHK.	WF. Zhang	2019.12.23	SCALE:	NONE 2:1 (.)	REV. A		±0.50
TITLE:	EQ-HM508 Series 2-Interlock X.X						
PART NO.	EQHM508xxxxDxx X.XX						
DWG NO.	EQ-HM508-B002 X.XX ±0.10						



KUNA Contact Technology Co. Ltd  
http://www.kunacon.com

