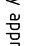
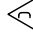
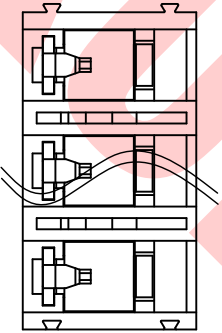
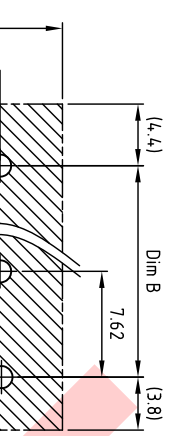
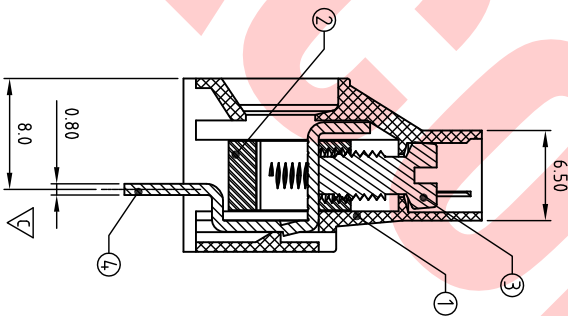
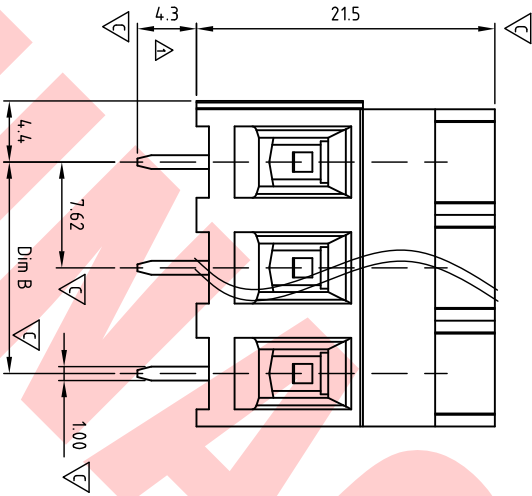
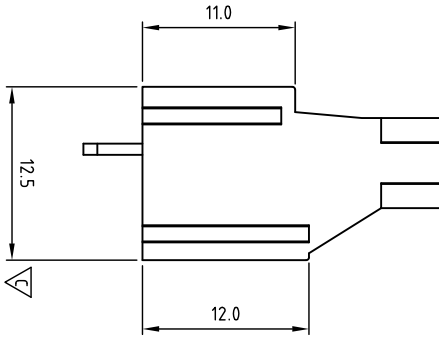
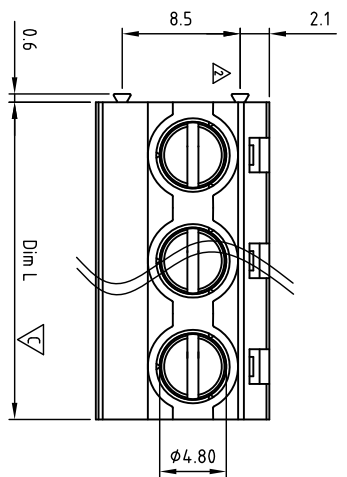


Technical data

- 1.Nominal voltage: 300V/30A  
PITCH:7.62mm
  - 2.Connection capacity:  
AWG 30-10
  - 3.Insulation Withstanding Voltage:  
AC 1600V/MIN
  - 4.Insulation Resistance:  
1000MΩ or more at DC500V
  - 5.Tightening torque:  
7Lb-In (8.0kgf.cm/0.8N.m)
  - 6.Screw thread: M3.5
  - 7.Stripping length: 7-8mm
  - 8.Using temperature range:-40C°-115C°  
Soldering temperature:250±10C°/5s
  - 9.Undimentioned Tolerances:  
Dim.L=P×7.62  
Dim.B=(P-1)×7.62  
P = number of poles (2-16)

	Dim B	Dim L
0-30mm	±0.15	±0.20
over 30mm-60mm	±0.20	±0.25
over 60mm-90mm	±0.25	±0.30
over 90mm	±0.30	±0.40

  - 10.Safety approval: 
  - 11.RoHS Compliance
  - 12.Critical dimension: 
- FMH/M762 xxx x xxx
- ① Poles 02-16
  - ② Color
  - 0 Black 3 Orange 5 Green 6 Blue 9 Pale grey.....
  - ③ Color
  - 000 K mark 00K KUNACON mark.



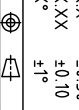
REV	SIGN	DESCRIPTION	WF.Z	CHK.	DATE
C	△	Interlocks is changed.	WF.Z		3/23/20
B	△	Dim is changed.	WF.Z		8/02/18

ITEM	NAME OF PART	MATERIAL	NOTES
4	CONTACT	COPPER	Tin PLATED
3	SCREW	STEEL	M3.5, Zn Plated
2	CAGE	BRASS	M3.5, Ni PLATED
1	BODY	PA66 UL94V-0	ALL COLOR

DWG.	WF. Zhang	DATE	2018.08.02	MM	SHEET: 1 OF 1	Tolerance
CHK.	WF. Zhang	DATE	2020.03.20	SCALE:	NONE 2.5:1 (.)	REV.: C

APP.	DATE	TITLE:	PART NO.	DWG NO.
		FM-H/762 Series "x" Slot Screw type	FMH/M762xxxxxxx	FM-H/762-B001

	Tolerance
X	±0.50
X.X	±0.30
X.XX	±0.10
X <sup>+</sup>	±1 <sup>+</sup>



KUNACON Contact Technology Co., Ltd  
http://www.kunacon.com